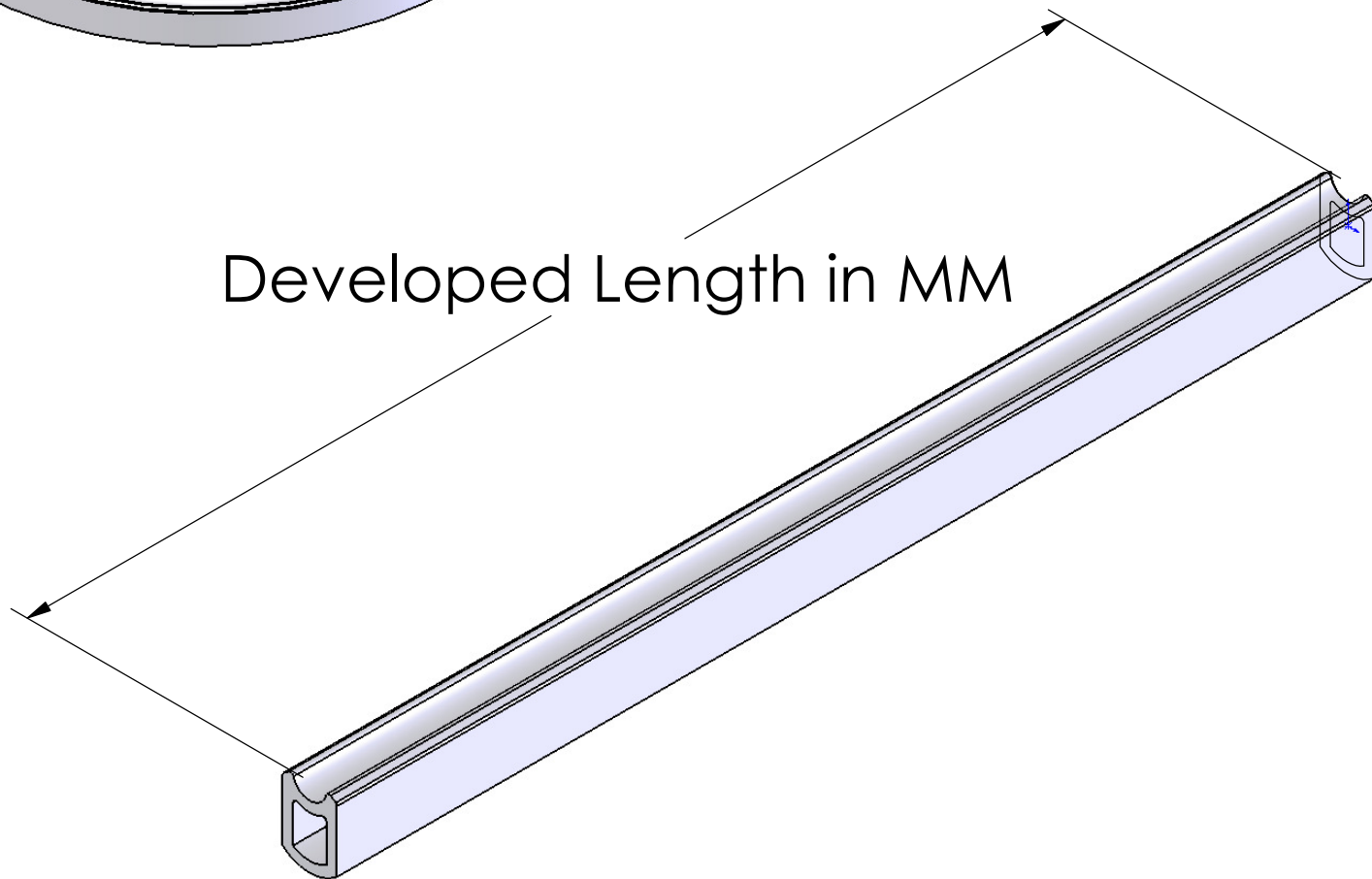


Please Note:  
The developed length is the length  
of the extrusion before joining  
The developed length must be calculated  
accurately for this field to provide a quote



Developed Length in MM

PROPRIETARY AND CONFIDENTIAL

THE INFORMATION CONTAINED IN THIS DRAWING IS THE SOLE PROPERTY OF  
ADVANCED MATERIALS. ANY REPRODUCTION IN PART OR AS A WHOLE  
WITHOUT THE WRITTEN PERMISSION OF ADVANCED MATERIALS IS PROHIBITED.

UNLESS OTHERWISE SPECIFIED:

DIMENSIONS ARE IN MM  
TOLERANCES: E1 & L2

DWG.

Frame size